



# CAPABILITY STATEMENT

Engineered Pumping Solutions for  
Industry, Infrastructure & Performance





## WHO WE ARE

Allflo Pumps & Equipment exists to help you move fluids safely, efficiently and with confidence, no matter the complexity of your site or process.

## WHAT TO EXPECT

- Custom Solutions
- Full Lifecycle Support
- Trusted Australian Builds

## OUR VALUES

### EXPERIENCE

With our extensive experience, our clients enjoy a superior experience.

### PEOPLE

We care about people: our staff, our clients, and our community.

### INNOVATION

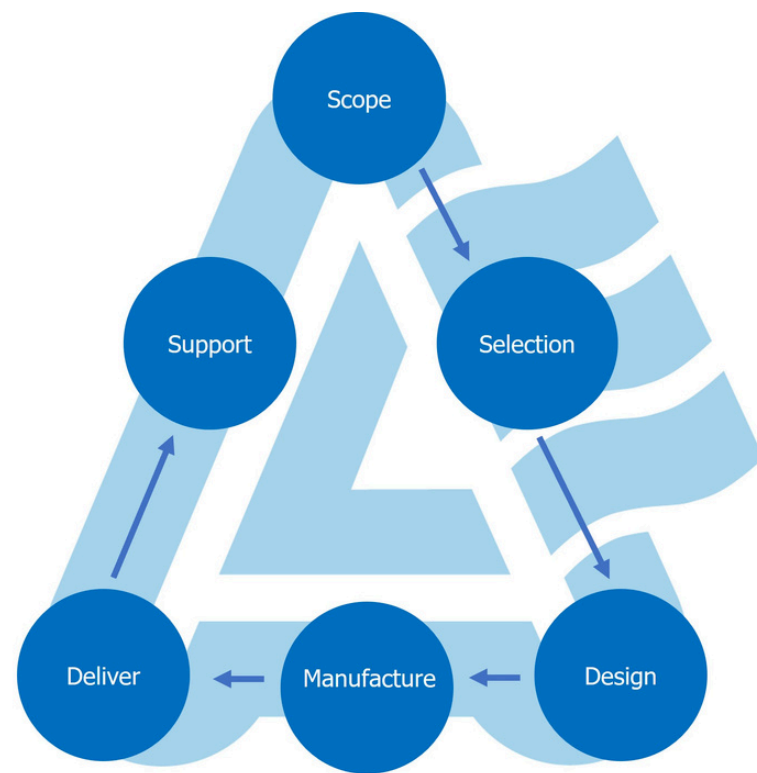
In everything we do, we seek a better, smarter and more innovative way.

### COURAGE

With a spirit of courage, we face challenges, learn and grow.



# HOW WE OPERATE



Our process is built for clarity, performance, and long-term reliability—no matter the size or complexity of your site.

- 01 SCOPE:** We start by understanding your environment, fluid type, system goals, and compliance requirements—so the solution is right from day one.
- 02 SELECT:** Our team identifies the most appropriate pump type and configuration for your application—balancing performance, reliability, and cost.
- 03 DESIGN:** We tailor the system to your specific needs, factoring in flow rate, head, chemical compatibility, layout, and control requirements.
- 04 MANUFACTURE:** Allflo systems are assembled and tested in-house, with full QA processes to ensure compliance and performance.
- 05 DELIVER:** We deliver complete packages—ready for installation, with clear documentation and responsive post-installation support.
- 06 SUPPORT:** From commissioning to spare parts, troubleshooting, and upgrades – we provide ongoing support as a long-term partner invested in your success.

# PUMPS ENGINEERED FOR REAL-WORLD DEMANDS

We serve clients across two key sectors, with tailored solutions for the challenges they face.

## INDUSTRIAL

Precision systems for food, pharma, chemical and manufacturing.

## MINING & CIVIL

Rugged pumping systems built for off-grid and high-demand environments.



# INDUSTRIES WE SERVE

## INDUSTRIAL

### **INDUSTRIAL & MANUFACTURING**

Pumps for chemicals, waste and general processing.

### **FOOD & BEVERAGE**

Sanitary systems for transfer, batching and CIP.

### **AGRICULTURE & IRRIGATION**

Solar-ready and self-priming pump solutions.

### **PULP, PAPER, PACKAGING & TIMBER**

Pumps for adhesives, fibre slurries and wastewater.

### **MINING & QUARRYING**

Dewatering, slurry transfer and heavy-duty trailers & skids.

### **PHARMACEUTICAL & PERSONAL CARE**

Precision dosing and cleanroom-ready equipment.

### **PAINT & CHEMICAL**

Corrosion-resistant pumps for volatile or hazardous fluids.

### **WASTEWATER & ENVIRONMENTAL**

Bypass, stormwater and effluent management systems.

### **CIVIL CONTRACTING & INFRASTRUCTURE**

Bypass, trench dewatering and fire system support.

## MINING & CIVIL

ALLFLO

# INDUSTRIAL

## WHERE OUR PUMPS PERFORM

Engineered solutions to keep flow moving, compliance tight, and production online.

**In industrial environments, flow is critical to every stage of production — from batching and processing to containment and discharge.**

Allflo designs pump systems that:

- Maintain flow through complex materials
- Reduce downtime and failure rates
- Meet hygiene, safety, and compliance standards

Whether transferring food products, handling chemicals, or managing wastewater — our industrial pump solutions are built to perform under pressure, without overengineering or overpromising.



*Helping industrial clients reduce downtime and simplify compliance through better pump systems.*





# CHALLENGES WE SOLVE

*Engineered pump systems to solve industrial flow, safety, and uptime challenges.*

## SLUDGE, SLURRY & SOLIDS BLOCKING FLOW

**High-volume pumps** move sludge, tailings & solids-heavy fluids **without clogging or wear.**

SELF-PRIMING

SUBMERSIBLE

SLURRY

CHEMICAL TRANSFER

MAGNET-DRIVE

DIAPHRAGM

**Leak-free systems** handle acids, solvents & volatile fluids—built **for compliance & containment.**

## CHEMICAL & CORROSIVE FLUID RISKS

## CLEANROOM OR FOOD SAFETY COMPLIANCE

**Sanitary pumps** meet FSANZ & HACCP standards for safe product handling in **regulated environments.**

PHARMACEUTICAL

CIP-COMPATIBLE

FOOD-GRADE

PERISTALTIC

BATCHING

DOSING

Accurate **dosing systems** for low flow, CIP or temperature-sensitive **batching & transfer.**

## UNSTABLE OR PRECISION FLOW CONDITIONS

## UPTIME IN HARSH OR REMOTE LOCATIONS

**Dry-run pumps** for remote, rugged sites & off-grid operations **where uptime matters.**

SELF-PRIMING DIESEL

SUBMERSIBLE

FIRE-READY

REMOTE MONITORING

VFD PACKAGES

SKID SYSTEMS

**Integrated skids** with VFDs, flow meters & telemetry **for real-time performance & automation.**

## COMPLEX SYSTEM CONTROL & INTEGRATION

ALLFLO

# **INDUSTRIAL** **WHAT WE BUILD**

Pumping systems engineered to protect production, meet compliance and keep flow moving.

**FOOD TRANSFER  
& PRODUCT  
HANDLING**

**DOSING,  
BATCHING &  
CIP SYSTEMS**

**EFFLUENT,  
WASHDOWN &  
UTILITY WATER**

**CORROSIVE  
& HAZARDOUS  
FLUIDS**

**PHARMA.  
& CLEANROOM  
FLUIDS**

**SKID PACKAGES  
& MODULAR  
SYSTEMS**





ALLFLO

# INDUSTRIAL FOOD TRANSFER & PRODUCT HANDLING

**Sanitary pump systems engineered for viscous food products like chocolate, dairy, sauces, and beverages—protecting hygiene and product quality at every stage.**

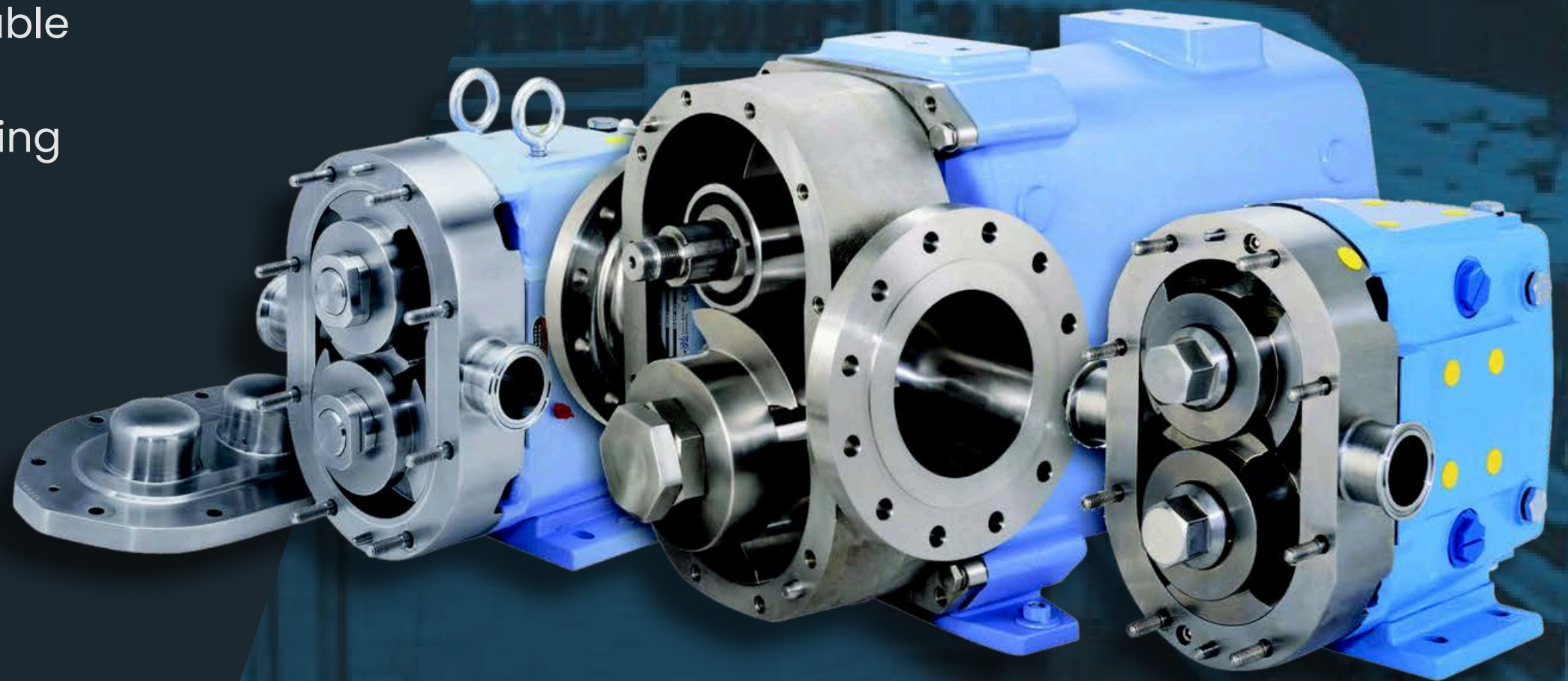
- Handles thick, shear-sensitive fluids
- Stainless & elastomer-grade options available
- CIP/SIP compatible for fast cleaning
- Designed for transfer, batching & inline dosing

## COMMON PUMP TYPES

PERISTALTIC

DIAPHRAGM

LOBE





ALLFLO

# INDUSTRIAL DOSING, BATCHING & CIP SYSTEMS

**Precision systems for accurate delivery of acids, additives, flavours, and CIP solutions—built to comply with food, beverage and chemical batching needs.**

- Supports inline blending, CIP & automated batching
- Handles high-viscosity or low-flow dosing
- Integrates with PLC and remote monitoring
- Ideal for repeatable, compliant dosing

## COMMON PUMP TYPES

PERISTALTIC

DIAPHRAGM

LOBE

HYGIENIC CENTRIFUGAL





ALLFLO

## INDUSTRIAL EFFLUENT, WASHDOWN & UTILITY WATER

Industrial-grade pumps built to manage greywater, CIP return, washdown, and runoff—available in corrosion-resistant and solids-handling designs.

- Suits wastewater, service water & low-pH fluids
- Available in submersible, lobe & end-suction styles
- Built for food, chemical & manufacturing sites
- Pairs with filtration & discharge infrastructure for full-system use

### COMMON PUMP TYPES

DOSING

PERISTALTIC

DIAPHRAGM

MAGNET-DRIVE





ALLFLO

# INDUSTRIAL CORROSIVE & HAZARDOUS FLUID PUMPS

**Engineered pump systems built for corrosive, explosive and hazardous fluids — delivering safe transfer, containment and chemical resistance for the most demanding sites.**

- Handle acids, solvents, volatile and Class 3/6/8 chemicals
- Suit IBC transfer, bunded chemical areas & high-risk dosing
- Built in 316SS, polypropylene, PVDF and alloy materials
- Leak-free magnet-drive, diaphragm and sealed designs
- Designed to meet site safety & chemical handling standards
- Comply with site safety & dangerous goods regulations

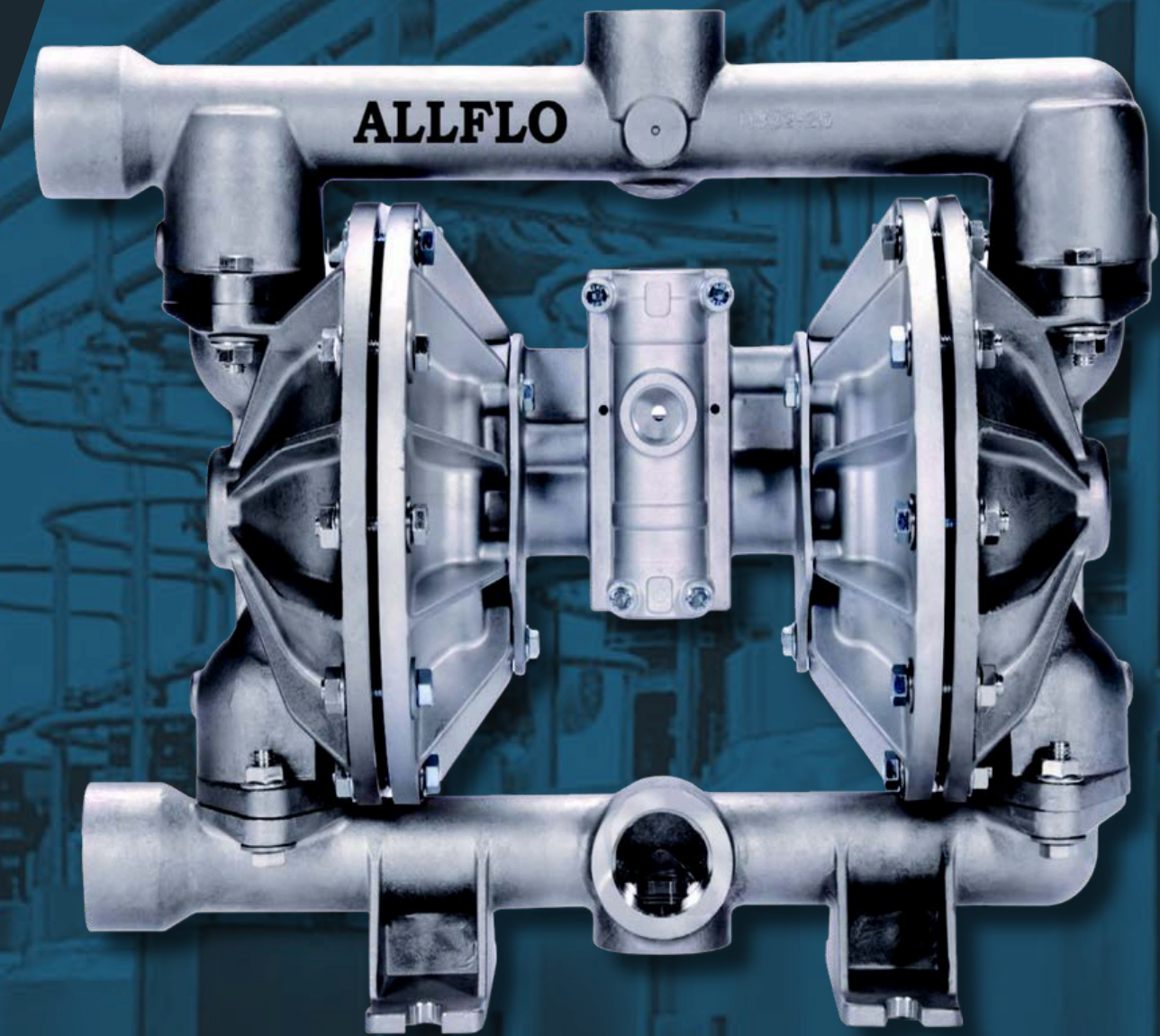
## COMMON PUMP TYPES

MAGNET-DRIVE

DIAPHRAGM

PERISTALTIC

CHEMICAL TRANSFER





ALLFLO

# INDUSTRIAL PHARMACEUTICAL & CLEANROOM PUMPS

**Precision-engineered pump systems for pharmaceutical, cleanroom and high-purity applications — designed to meet strict validation and hygiene standards.**

- Transfers purified media, reagents & sanitising fluids
- Sealed designs suit cleanrooms, labs & personal care sites
- Compatible with SIP, CIP & FDA-grade materials
- Available in magnet-drive, diaphragm & peristaltic models
- Engineered for contamination control & process repeatability

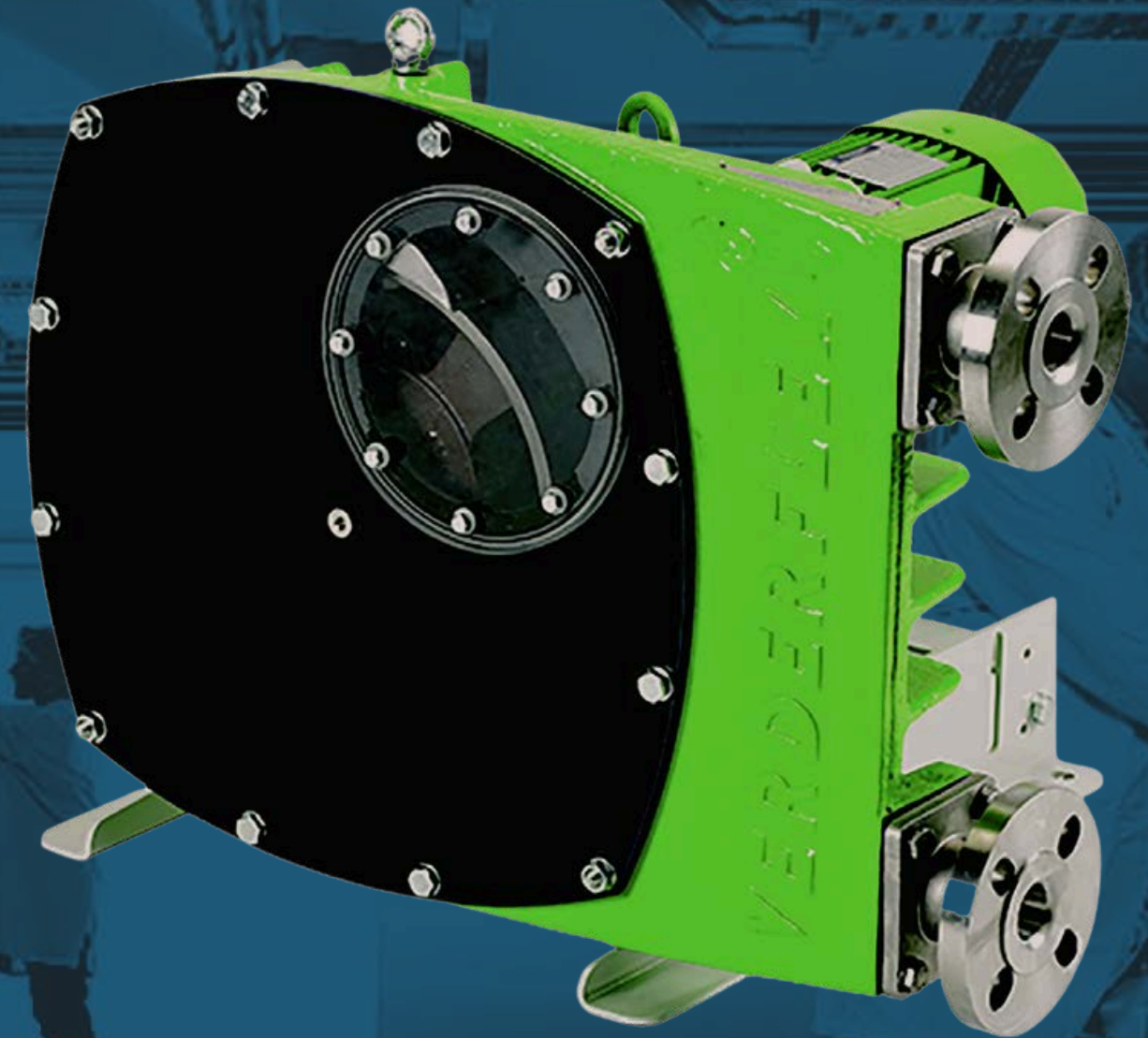
## **COMMON PUMP TYPES**

**PERISTALTIC**

**DIAPHRAGM**

**LOBE**

**SANITARY CENTRIFUGAL**





ALLFLO

# INDUSTRIAL SKID PACKAGES & MODULAR SYSTEMS

**Integrated pumping systems pre-assembled for performance, reliability and ease of installation. Built to streamline setup, reduce onsite risk and meet exact space, compliance, and process needs.**

- Fully engineered skids with pump, pipework & control systems
- Designed to match layout, flow & compliance requirements
- Includes frames, switchboards, bunds & safety extras
- Speeds up install, commissioning & integration
- Ideal for batching, blending, dosing & transfer

## COMMON SYSTEMS

SKID SYSTEMS

DOSING

VFD PACKAGES

REMOTE MONITORING





# INDUSTRIAL SUCCESS STORIES

Real-world outcomes from production and processing environments.



## FOOD & BEVERAGE **CHOCOLATE TRANSFER**

Replaced a shear-prone transfer setup with a stainless lobe pump.

Reduced product loss by 30%



## MANUFACTURING **WASTEWATER UPGRADE**

Progressive cavity pumps replaced frequent clogging systems.

Reduced maintenance (week→quarter)



## GENERAL PROCESSING **AUTOMATED DOSING SKID**

Designed a skid-mounted batching unit with closed-loop feedback.

Cut manual handling time by 40%



ALLFLO

## **MINING & CIVIL** **PUMP SYSTEMS FOR HIGH-DEMAND ENVIRONMENTS**

**Engineered for remote access, rapid deployment & 24 hour performance.**

**In high-demand environments, water movement is mission-critical — from pit dewatering and trench bypass to flood response & fire safety.**

Allflo delivers pump systems that:

- Manage water reliably in tough terrain
- Respond quickly to urgent onsite needs
- Withstand abrasive media, corrosion and harsh conditions

Whether supporting mining operations, civil works or emergency response, Allflo's rugged pumps are built to deploy fast, run tough and stay compliant.

---

*Helping contractors, councils, and operators move water reliably—no matter how remote, urgent, or high-pressure.*





# CHALLENGES WE SOLVE

Engineered pump systems to solve field, fluid, and compliance challenges in remote and rugged environments.

## PIT DEWATERING & DRAINAGE

**High-volume pumps** move water from **pits and trenches** fast — even with debris.

SELF-PRIMING

SUBMERSIBLE

TRAILER-MOUNTED

STANDPIPE

DIESEL

SKID SYSTEMS

**Rapid-deploy units** deliver clean or reclaimed water for **trenching, bypass & dust control.**

## BYPASS & TRENCHING SUPPORT

## SLURRY & SOLIDS TRANSFER

**Solids-handling pumps** move abrasive mixtures like sand, gravel, and tailings with **minimal wear.**

SLURRY

LOBE

TRASH PUMPS

FIRE-READY

EMERGENCY SKIDS

BUNDED SYSTEMS

**Skid or trailer systems** offer rapid response for **flood, fire, or failure events.**

## FLOOD RELIEF & EMERGENCY BACKUP

## EFFLUENT & DISCHARGE MANAGEMENT

Systems built for **runoff, waste water** or **chemical discharge** — fully **compliant & site-ready.**

CONTAINMENT

BUNDED TANKS

SUBMERSIBLE PUMPS

FIRE-READY

STORAGE TANKS

DIESEL PUMPS

**Fire-rated tanks and pump systems** ensure **compliant protection and water access.**

## FIRE SAFETY & WATER SUPPLY

ALLFLO

## **MINING & CIVIL** **WHAT WE BUILD**

Heavy-duty systems engineered to perform on-site, off-grid and under pressure.

**DEWATERING  
PUMP SYSTEMS**

**STANDPIPE &  
TRAILER  
PACKAGES**

**BORE PUMP  
SYSTEMS**

**AIR-OPERATED  
DIAPHRAGM  
PUMPS**

**SUBMERSIBLE  
PUMP SYSTEMS**

**PROCESS &  
UTILITY PUMPS**





ALLFLO

## MINING & CIVIL DEWATERING PUMPS

**High-volume pump systems** for moving water from pits, trenches tunnels & construction zones —available in **diesel** or **electric** builds.

- Flows up to 400 L/s
- Head up to ~250m
- Up to 76mm solids handling
- Materials to suit water quality
- Custom-built solutions

### COMMON SOLUTIONS

SELF-PRIMING

DIESEL-DRIVEN

TRASH PUMPS

SKID SYSTEMS

VFD PACKAGES

REMOTE MONITORING





ALLFLO

## MINING & CIVIL STANDPIPE PACKAGES

**Transportable standpipe systems** with self-priming pumps and galvanized pipework for dust suppression & vehicle fill points.

- Self-priming pump systems
- Remote start options
- Galvanised steel construction
- Custom height configurations
- Standard standpipe sizes 4"–12"
- Larger sizes available

### COMMON SOLUTIONS

SELF-PRIMING

STANDPIPE

DIESEL-DRIVEN PACKAGE

CUSTOM GUAGE & HEIGHT

GALVANISED FRAME





ALLFLO

## MINING & CIVIL BORE PUMP PACKAGES

**Complete bore pump packages** with headworks, automation and power supply—engineered for efficient groundwater extraction.

- End-to-end borehead & pump packages
- Energy-efficient VSD motors
- Corrosion-resistant materials
- Remote monitoring with telemetry
- Generator included for off-grid install

### COMMON SOLUTIONS

BORE PUMP

VFD PACKAGES

REMOTE MONITORING

SUBMERSIBLE PUMPS

SOLAR-READY





ALLFLO

## MINING & CIVIL AIR-OPERATED DIAPHRAGM PUMPS

**Portable AODD pumps** designed for waste, slurry, or chemical handling in demanding conditions.

- Lightweight & portable with roll cage
- Air motor with minimal moving parts
- Suits harsh or abrasive fluids
- Solids-handling configurations
- Self-priming & dry-run safe

### COMMON SOLUTIONS

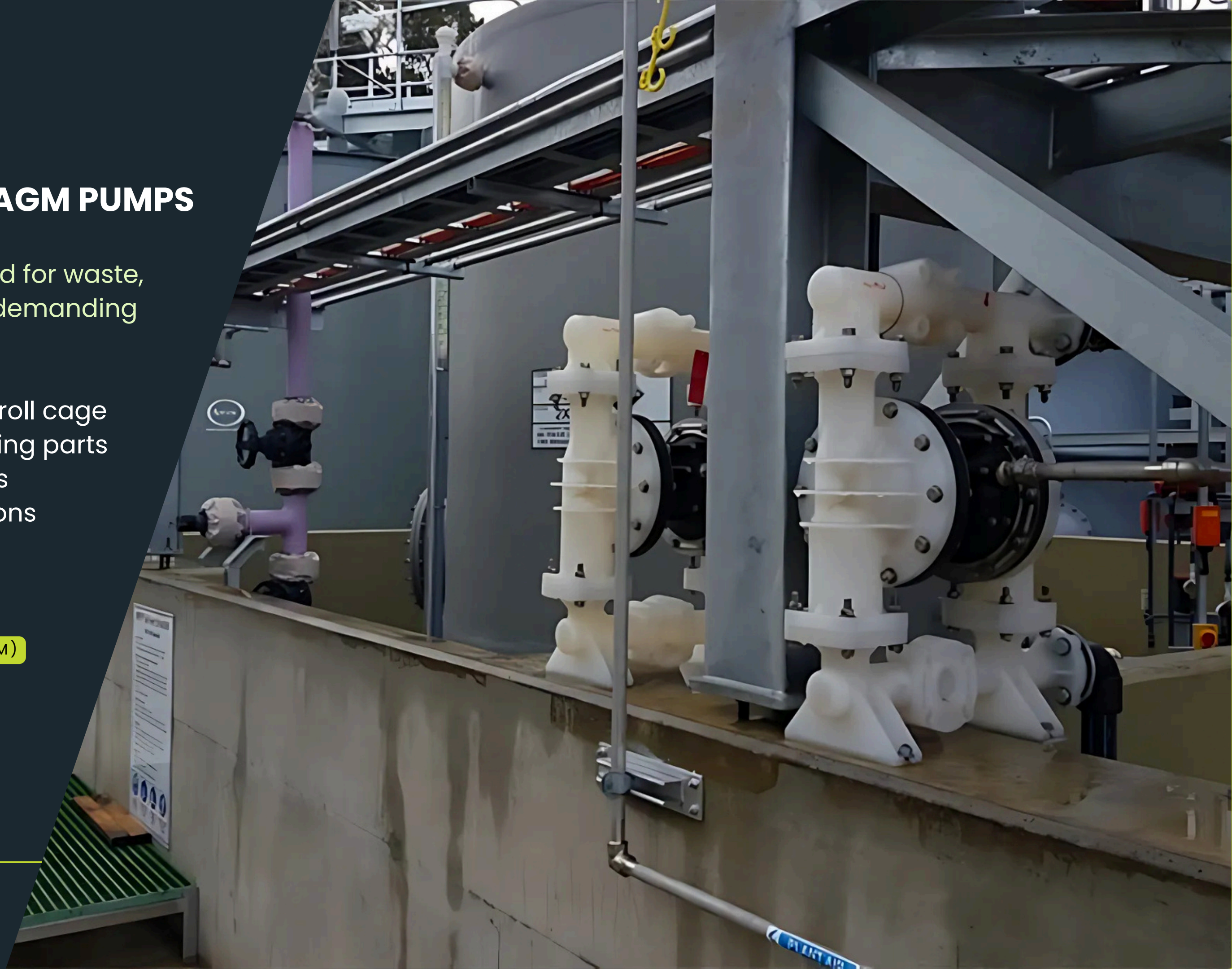
**AODD (AIR-OPERATED DOUBLE DIAPHRAGM)**

**DIAPHRAGM**

**POLY/STAINLESS STEEL OPTIONS**

**PORTABLE**

**SOLIDS-HANDLING**





ALLFLO

## MINING & CIVIL SUBMERSIBLE PUMPS

**Submersible drainage & slurry pumps**  
engineered for high head, solids handling & remote control.

- Solids-handling & high-head models
- Pontoon or suspended mounting options
- Generator & control packages
- Level control systems
- 1000V options for mining & plant use

### COMMON SOLUTIONS

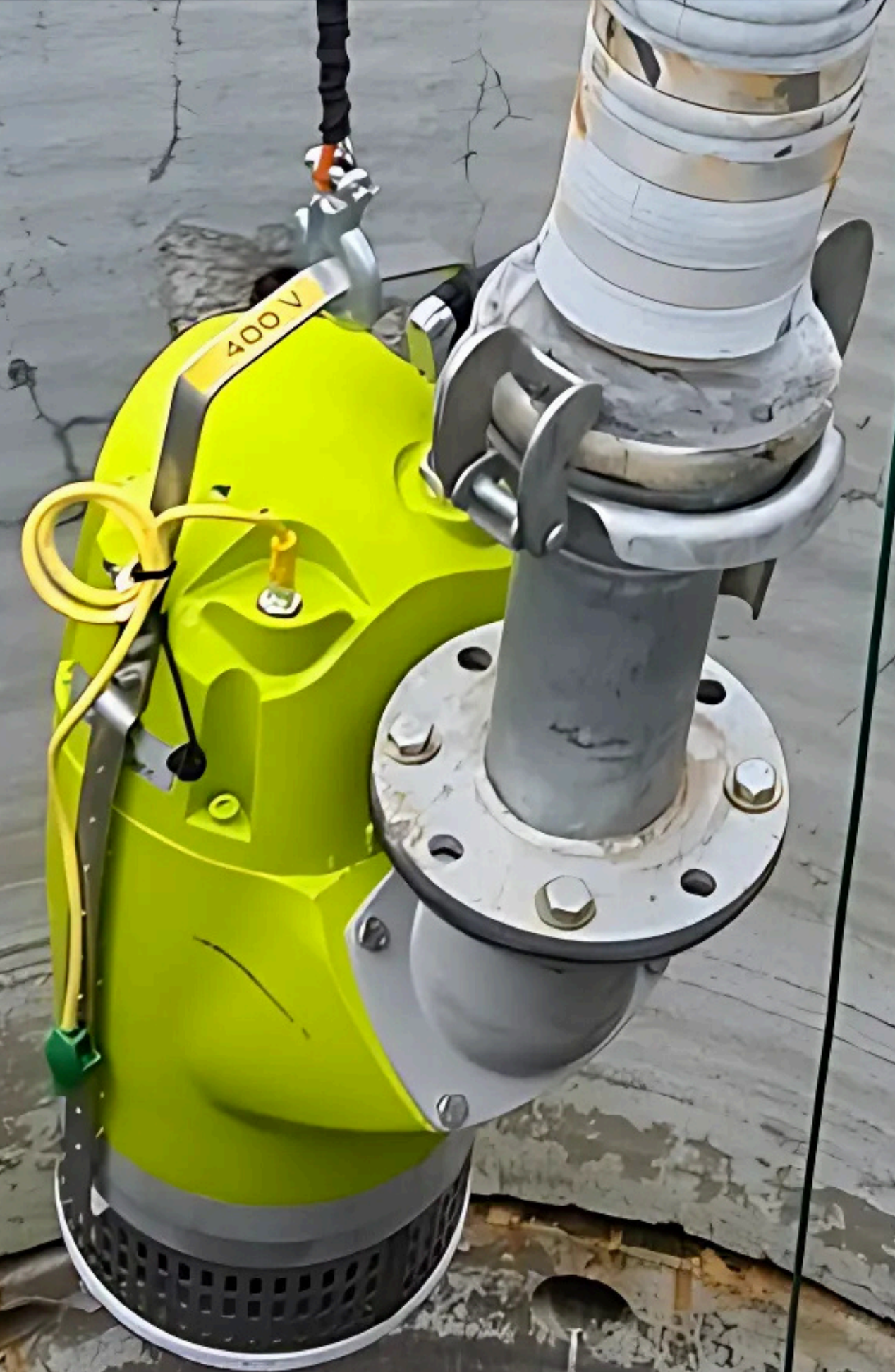
SUBMERSIBLE

DRAINAGE

SLURRY

HIGH-HEAD

LEVEL CONTROL





ALLFLO

## MINING & CIVIL PROCESS PUMPS

**Heavy-duty process pumps** for thickener underflow, filter press & corrosive fluid transfer.

- Metering & chemical dosing
- Filter press applications
- Corrosion-resistant designs
- Ideal for mineral processing & tailings

### COMMON SOLUTIONS

PERISTALTIC

DIAPHRAGM

DOSING

SLURRY

FILTER PRESS





# MINING & CIVIL SUCCESS STORIES

Outcomes from high-stakes sites where performance matters.



## MINE PIT DEWATERING WA GOLDFIELDS

Replaced hire fleet with Remko's  
self-priming diesel package.

Reduced rental costs by 60%



## CIVIL TRENCHING PROJECT METRO MELBOURNE

Delivered a rapid-response bypass  
system for active trenching.

Avoided trench flooding by major rain event



## EMERGENCY FLOOD RELIEF REGIONAL VIC

Dispatched trailer pump units  
within 24 hours of callout.

Protected residential zone from flooding





NEED HELP WITH FLOW, DOWNTIME OR COMPLIANCE?  
**SPEAK WITH OUR PUMP SPECIALISTS**

☎ **1800 333 424**

✉ [sales@allflo.com.au](mailto:sales@allflo.com.au)

🌐 [www.allflo.com.au](http://www.allflo.com.au)

## INDUSTRIAL

Helping operators reduce downtime and maintain compliance—no matter how demanding the conditions.

## MINING & CIVIL

Helping contractors, councils, and operators move water reliably—no matter how remote, urgent, or high-pressure.

---

**Built to perform. Backed to last. Trusted across Australia.**

